

## BPA INTEGRATED GREASE SEPARATOR

For animal and vegetable fats, oils and greases

### PRODUCT DESCRIPTION

**ESEP** reinforced concrete "integrated grease separator" for animal and vegetable fats, oils and greases, with vertically integrated sludge trap, series **BPA-KVI 4000**, capacities **2, 4, 7 and 10 l/s**. Resistant against mineral liquids because of high-quality concrete composition using HSR concrete, independently tested and approved in accordance with NEN-EN 1825, par. 8.2.1 and 5.2.2. Manhole cover cast iron concrete combination.

### APPLICATIONS

Grease separators and sludge traps are widely used in areas where professional preparation of food takes place, and other companies where greases and oils of vegetable or animal origin may contaminate the water effluent, e.g.:

- Hotels
- Restaurants
- Canteens
- Elderly centres
- Hospitals
- Butcheries
- Soap and stearin factories
- Oil mills
- Margarine and vegetable oil factories
- Fast-food preparation plants

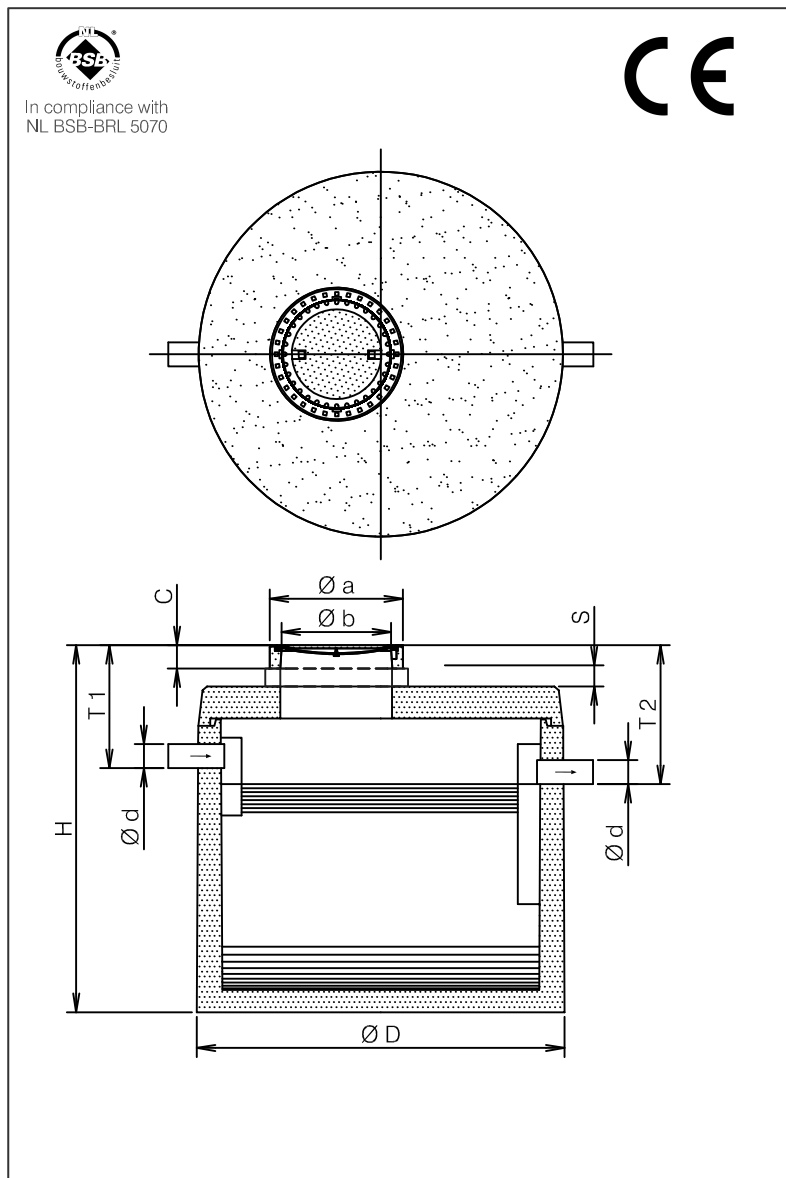
### QUALITY

- Constructed and designed for static loads in accordance with NEN-EN 1825 - BRL 5252.
- Resistant against greases because of high-quality concrete composition using HSR concrete.
- Concrete quality in accordance with NEN-EN 206-1 and NEN-EN 8005, minimum C35/45, environmental classification XA3.
- CE certified.

Manhole cover:

- Cast iron-concrete combination conform NEN-EN 124 class B 125 kN
- or class D 400 kN wheel pressure.

### DRAWING



### SPECIFICATIONS

Type	l/s	I*	O*	Ø D	Ø d	H	T 1	T 2	C	Ø a	Ø b	Kg.
BPA-KVI 4002	2	514	307	1620	110	2060	565	655	130	750	605	4100
BPA-KVI 4004	4	418	196	1620	110	2060	565	655	130	750	605	4100
BPA-KVI 4204	4	688	415	1820	110	2105	615	705	130	750	605	5300
BPA-KVI 4007	7	1060	480	2300	160	2160	635	725	130	750	605	7250
BPA-KVI 4010	10	1290	750	2300	160	2160	635	725	130	750	605	7250
In case of cover class D 400 kN							+30	+30	+30	+30		

I\* = Volume of sludge trap (litres).

O\* = Storage volume of oil/fat (litres).

S = Adjustable height by using concrete extension rings.

Available in heights 100, 200, 300 and 500 mm. To be installed water-tight.