

PUMP SUMP (excluding pumping installation and switchbox)

For pumping water to a higher elevation

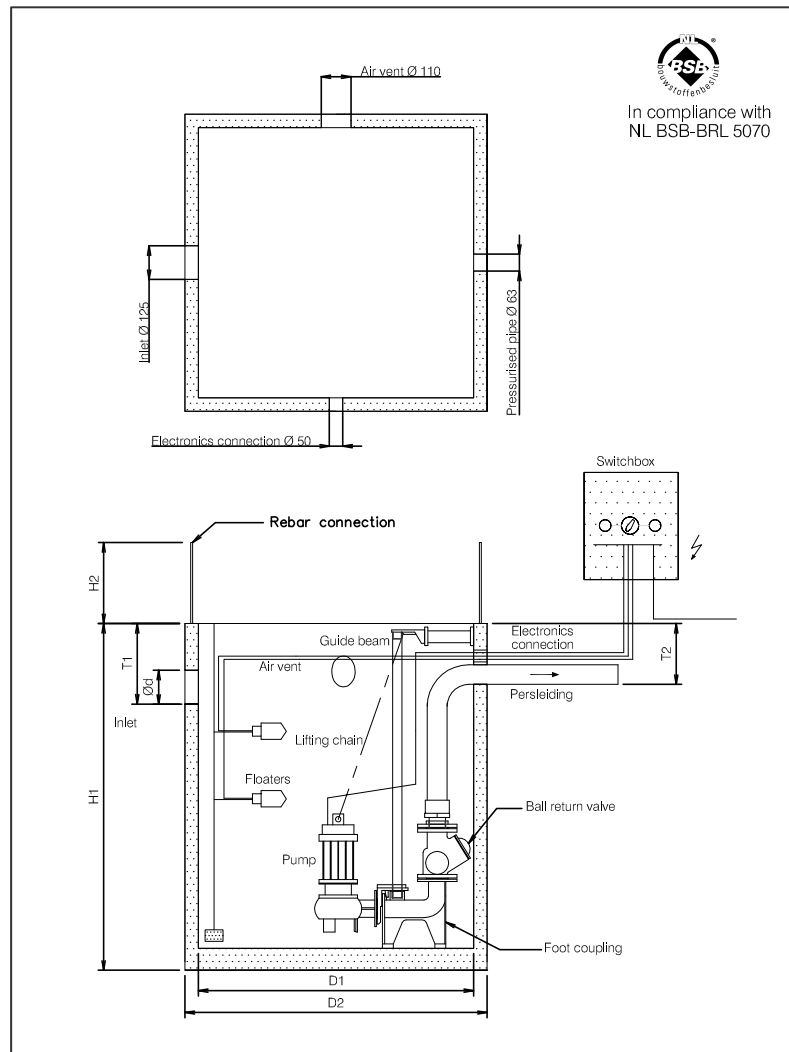
PRODUCT DESCRIPTION

ESEP prefabricated reinforced concrete "pump sump", series **P 600/800/1000-S**. Inlet fitted with Forsheda rubber connection, Ø 125 mm. Air vent Ø 110 mm, electronics connection Ø 50 mm and pressurised pipe Ø 63 mm. Sump comes with rebar connections, ca. 300 mm long.

APPLICATIONS

Pumping installations are used when waste water needs to be drained or pumped to a higher elevation.

DRAWING



QUALITY

- Concrete quality in accordance with NEN-EN 206-1 and NEN 8005, minimum C35/45 environmental classification XC2
- Inlet fitted with Forsheda rubber Ø 125 mm
- Air vent Ø 110 mm
- Electronics Ø 50 mm
- Pressurised pipe Ø 63 mm
- Custom connections possible
- Positions of connections can be customised
- Optional pipings completely made from HDPE

SPECIFICATIONS

Type	I*	D1	D2	Ø d	H1	H2	T 1	T 2	Kg.
P 600-S	325	600x600	780x780	125	900	300	250	200	950
P 800-S	544	800x800	1000x1000	125	1000	300	250	200	1095
P 1000-S	1200	1000x1000	1200x1200	125	1350	300	250	200	1900

I* = Volume of sump (litres).

Pumping installation can be completely pre-assembled before delivery.

** N.B. in case of intensive traffic extra precautions need to be made. Follow the installation instructions carefully.