

SEPTIC TANK (in accordance with Wvo septic tank regulations)

For domestic waste water purification (IBA class I)

PRODUCT DESCRIPTION

ESEP reinforced concrete prefab "septic tank" for water containing faecal matter, **series SR 9000**. In- and outlet fitted with rubber connections for plastic pipings and 2 concrete system walls. Concrete deck with concrete manhole cover, not suited for traffic loads and maximum level of ground covering 500 mm. Optional, in case of traffic loads, weighted concrete deck with manhole cover cast iron or cast iron-concrete combination.

APPLICATIONS

An IBA class I is intended for the purification of domestic waste water in areas where no higher degree of purification than class I is required. After this, the water may be led to the surface water. Discharging water without treatment is not allowed.

QUALITY

- Constructed and designed in accordance with Wvo septic tank regulations, no. RH 97/1665 (3 compartments)
- Concrete quality in accordance with NEN-EN 206-1 and NEN 8005, minimum C35/45 environmental classification XC2
- Adheres to Dutch building materials resolution, NL BSB-BRL 5070
- CE certified

Optional:

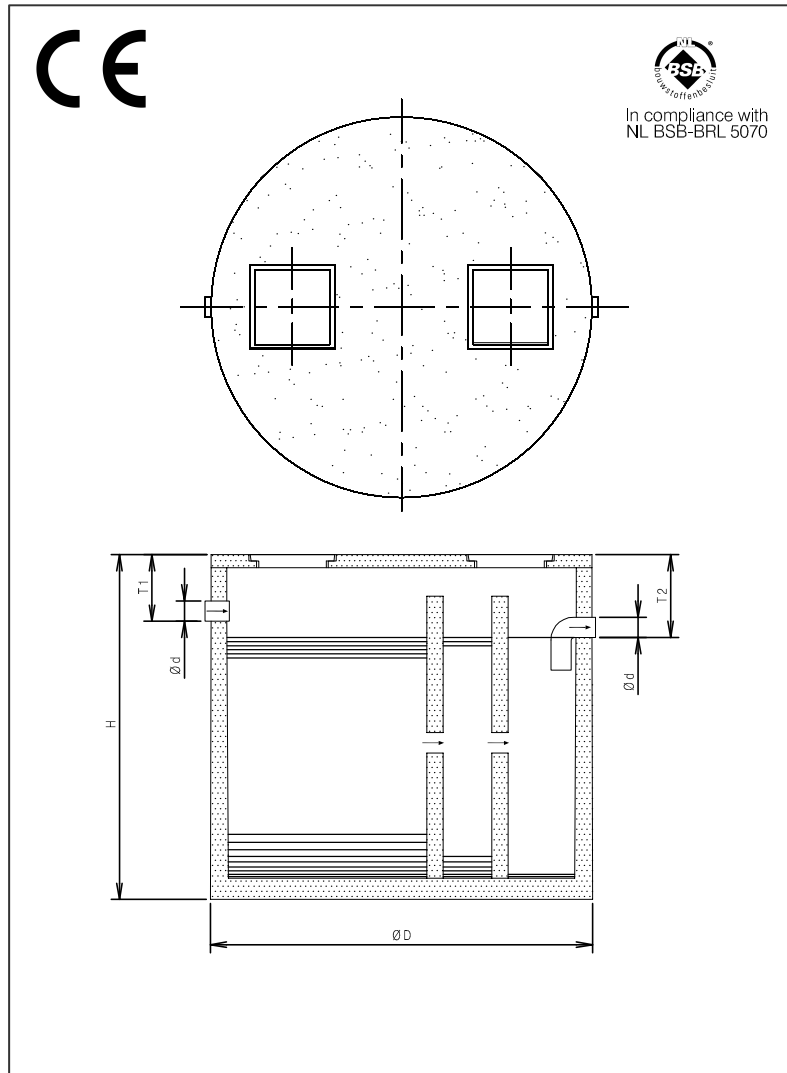
In case of heavy traffic loads, weighted concrete deck class B 125 kN with manhole cover:

- cast iron lid in accordance with NEN-EN 124 class B 125 kN
- or cast iron-concrete combination, class D 400 kN wheel pressure**

In case of high ground water level and/or deep placement:

- Steel fibers in concrete composition
- Liquid tight connection between concrete well and cover
- Liquid tight finish on inside of well

DRAWING



SPECIFICATIONS

Type	I*	Ø D	Ø d	H	T1	T2	Kg.
SR9060	6000	2350	125	2060	310	410	5900
				In case of cover class B 125 kN**	+150	+150	6900
				In case of cover class D 400 kN**	+220	+220	6900
SR90120	12000	3480	125	2000	350	450	9640
				In case of cover class B 125 kN**	+130	+130	11355
				In case of cover class D 400 kN**	+200	+200	11355

I* = Volume of septic tank (litres)

** N.B. Maximum level of ground covering 500 mm. When high groundwater level, intensive traffic or deeper placement is present, extra precautions have to be made. Factory warranty on water tightness up to the usual aquiferous range.