

DOMESTIC WASTEWATER PURIFICATION SYSTEM (IBA)

For domestic wastewater

PRODUCT DESCRIPTION

ESEP reinforced concrete "domestic wastewater purification system", type 1 to 40. Supplied with pre-sedimentation compartment, bioreactor with time interval controlled aeration and post-sedimentation compartment. Only the domestic wastewater outlets can be connected to the installation. Standard type only suited for pedestrian traffic.

APPLICATION

The domestic waste water purification installation is intended for the purification of domestic wastewater, there where drainage to municipal sewers is not available. In case no higher degree of purification than class II is required the wastewater, after treatment in this installation, can be led to the surface water.

QUALITY

- Constructed and designed in accordance with European norm NEN-EN 12566-3
- Concrete quality in accordance with NEN-EN 206-1 and NEN 8005, minimum C35/45 environmental classification XC2
- CE certified

Degree of purification

- BOD < 25 mg/l O₂
- COD < 125 mg/l O₂
- Small particles < 30 mg/l

Optional:

In case of traffic loads, heavier concrete cover 125 kN with manhole cover:

- cast iron cover in accordance with NEN-En 124 class B 125 kN
- or cast iron-concrete combination class D 400 kN wheel pressure**

In case of high ground water level and/or deep placement:

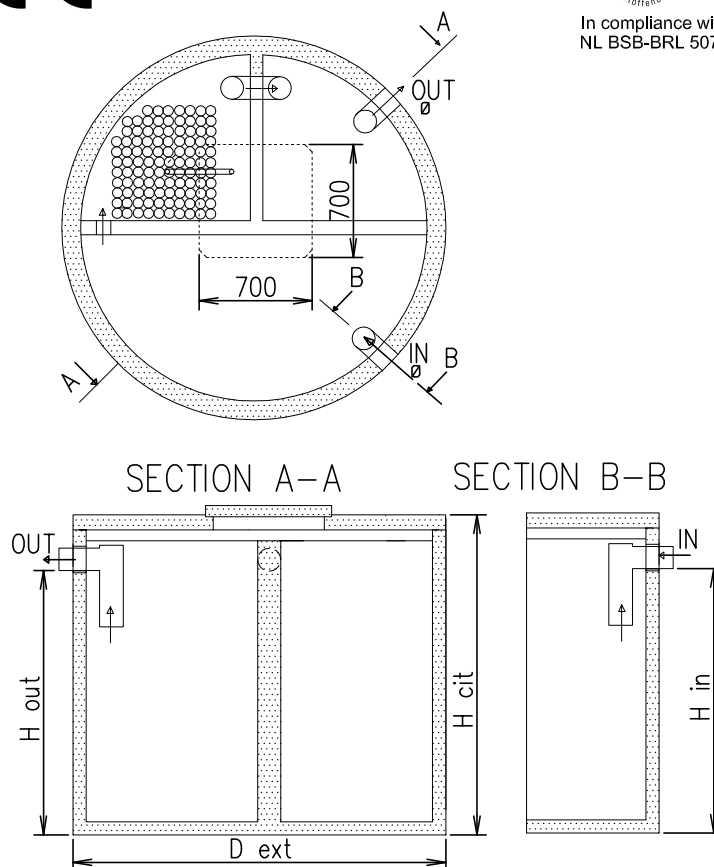
- Steel fibers in concrete composition
- Liquid tight connection between concrete well and cover
- Liquid tight finish on inside of well

- External control unit

DRAWING



In compliance with
NL BSB-BRL 5070



SPECIFICATIONS

Type	D ext.	H cit	H in	H out	Ø IN/OUT	Kg.	Kg.*
1-4, 1-5, 1-6, 7-9	2230	1730	1480	1420	110	4800	5610
10-14	2350	2160	1890	1830	125	5700	6700
15-19	2810	2060	1760	1700	160	7900	9000
20-28	3480	1930	1580	1520	200	9600	11310
29-40	3480	2480	2080	2020	200	11200	12910

Kg.* = weight in case of concrete cover class B125 kN

** N.B. Maximum level of ground covering 500 mm. When high groundwater level, intensive traffic or deeper placement is present, extra precautions have to be made. Factory warranty on water tightness up to the usual aquiferous range.

dimensions in mm – subject to change – all rights reserved

05-2016-02-IBA 1-40 EN