

## INTEGRATED GREASE SEPARATOR

For animal and vegetable oils, fats and greases

### PRODUCT DESCRIPTION

**ESEP** HDPE "integrated grease separator" for animal and vegetable oils, fats and greases, with integrated sludge trap, **series PE.VI 4000 HV/E**, for underground placement. **Capacities 2, 4, 7 en 10 l/s**. Cover types: class A 15 kN (cast iron cover, or lockable steel cover), class B 125 kN (round cast iron cover on concrete base) or class D 400 kN (concrete plate with cast iron cover on concrete base). The shaft height is to be adjusted during installation by the party responsible for installation

### APPLICATIONS

Grease separators and sludge traps are widely used in areas where professional preparation of food takes place, and other companies where greases and oils of animal or vegetable origin may contaminate the water effluent, e.g.:

- Hotels
- Restaurants
- Canteens
- Elderly centres
- Hospitals
- Butcheries
- Soap and stearine factories
- Oil mills

### QUALITY

- Capacity determined, dimensioned and tested in accordance with NEN-EN 1825 - BRL 5252.
- HDPE is especially resistant to waste water contaminated with fatty acids (no corrosion).
- CE certified.

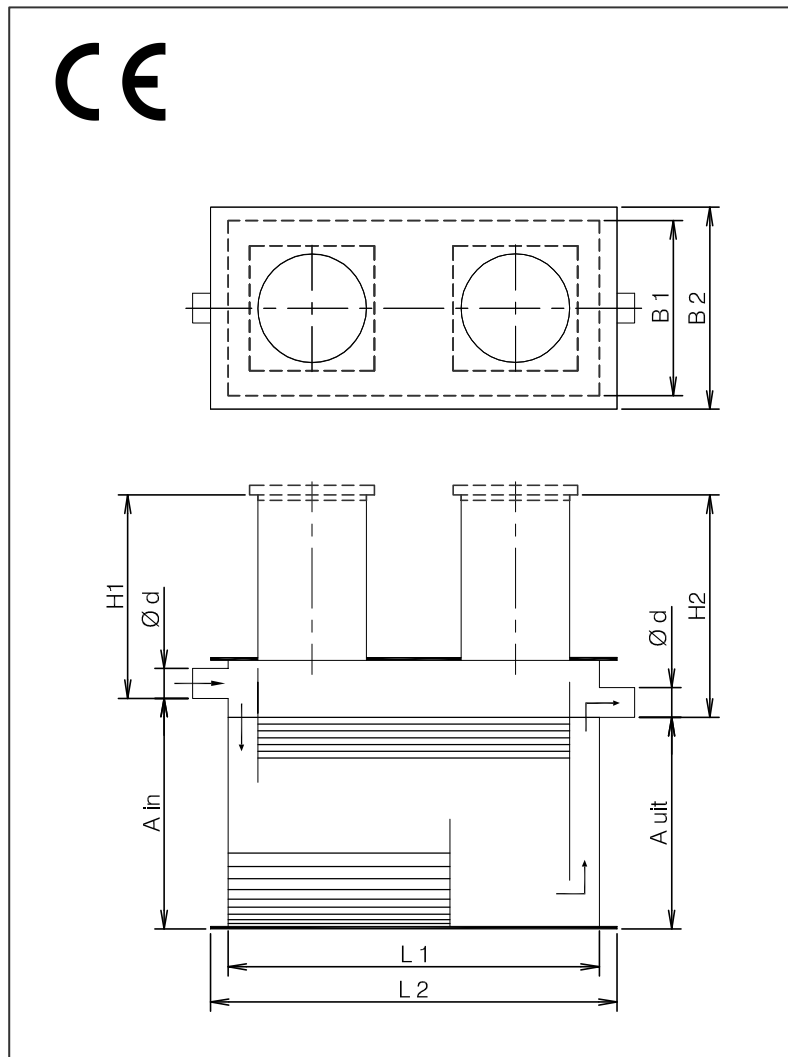
#### Manhole covers

- class A 15 kN (cast iron cover or lockable galvanised steel cover)
- class B 125 kN (round cast iron cover on concrete base)
- class D 400 kN (concrete plate with cast iron cover on concrete base, including rubber ring)

#### Optional:

- NBR couplings
- Grease level alarm instruments

### DRAWING



### SPECIFICATIONS

Type	I/s	I*	O*	Ø d	L 1	L 2	B 1	B 2	A in	A uit	Dks.	Kg.
PE.VI 4002 HV/E	2	200	125	110	1460	1500	690	750	850	780	2	175
PE.VI 4004 HV/E	4	400	290	110	1960	2000	960	1000	850	780	2	235
PE.VI 4007 HV/E	7	700	525	160	2000	2060	1015	1055	1305	1235	2	450
PE.VI 4010 HV/E	10	1000	850	160	2940	3000	1015	1055	1300	1230	2	650

I\* = Volume of sludge trap (litres).  
O\* = Storage volume of oil/fat (litres).

Type	H1 min./max.	H2 min./max.
PE.VI 4002 HV/E	220/770	290/840
PE.VI 4004 HV/E	220/770	290/840
PE.VI 4007 HV/E	270/820	340/890
PE.VI 4010 HV/E	270/820	340/890

For determining and calculating the nominal separator size feel free to contact us for support according to the European norm EN-1825

\*\* N.B. Maximum level of ground covering 500 mm. When high groundwater level, intensive traffic or deeper placement is present, extra precautions have to be made. Factory warranty on water tightness up to the usual aquiferous range.

dimensions in mm – subject to change – all rights reserved

02-2016-02-PE.VI 4000 HVE 2-10 EN