

## SEPARATOR SEDIMENTABLE AND FLOATING PARTICLES

For sedimentable and floating particles

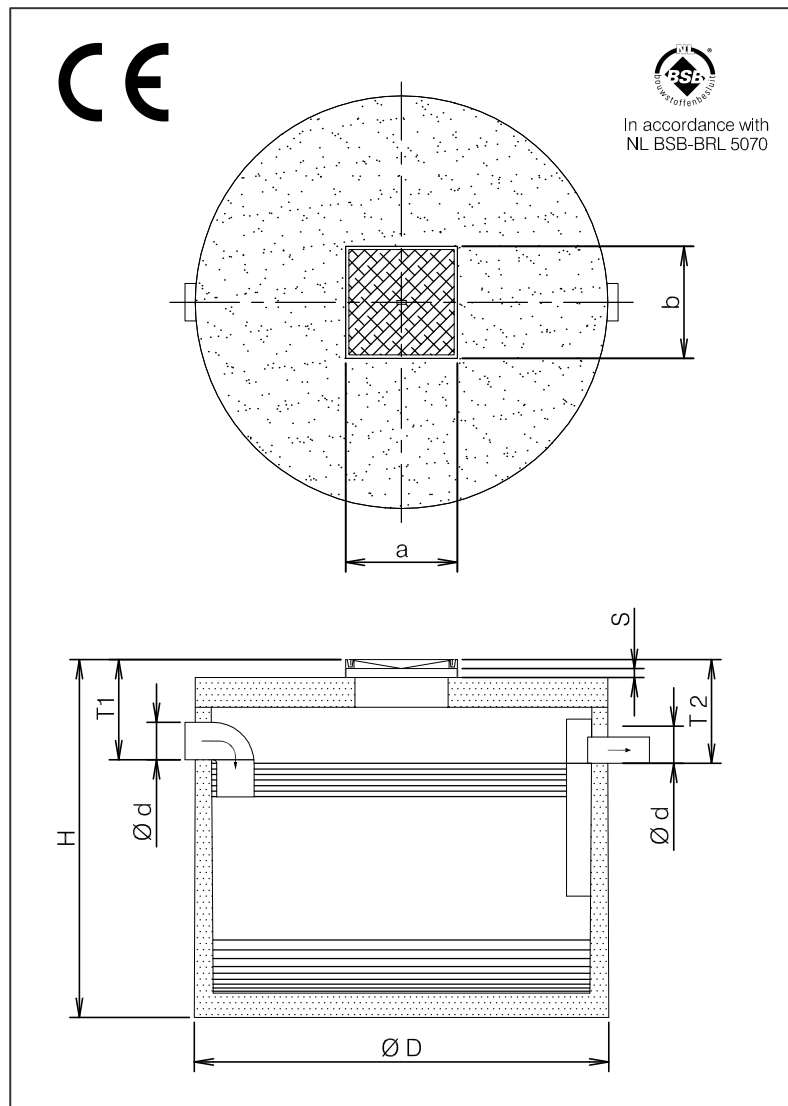
### PRODUCT DESCRIPTION

**ESEP** reinforced concrete "separator for sedimentable and floating particles", series **BO 2000** volumes **1750, 2200, 3000, 5000, 7500, 10000 15000 and 20000 l/s**. Resistant against mineral liquids by means of internal surface treatment using a watertight concrete layer followed by two-component epoxy coating. Intake and outlet fitted with flexible Forsheda connection for plastic pipings. Manhole cover cast iron lid or cast iron-concrete combination.

### APPLICATIONS

Separators for sedimentation and floating particles are widely used in situations where both sedimentable substances, like sand and sludge, and floating particles, like wood and plastics, contaminate the waste water.

### DRAWING



### QUALITY

- Provided with internal acid- and oil resistant two-component epoxy coating.
- Capacity determined, dimensioned and tested according to NEN-EN 858
- Concrete quality in accordance with NEN-EN 206-1 and NEN 8005, minimum C35/45 environmental classification XC2
- CE certified

#### Manhole cover:

- cast iron lid in accordance with NEN-EN 124 class B 125 kN
- or cast iron - concrete combination class D 400 kN wheel pressure

### SPECIFICATIONS

Type	I*	Ø D	Ø d	H	T 1	T 2	a	b	Kg.
BO 2017	1750	1500	125	1650	450	470	600	600	1805
BO 2022	2200	1500	160	1830	450	470	600	600	1925
BO 2030	3000	1700	200	1830	450	470	600	600	2415
BO 2050	5000	2230	200	1880	490	510	600	600	4875
BO 2070	7500	2350	250	2310	580	600	600	600	5500
BO 20100	10000	2810	250	2210	580	600	600	600	7700
BO 20150	15000	3480	250	2080	580	600	600	600	9975
BO 20200	20000	3480	250	2630	580	600	600	600	11295
In case of cover class D 400 kN**				+ 70	+ 70	+ 70			

I\* = Total volume of the sludge trap (litres).

S = Adjustable height by using concrete extension rings.

Available in heights 200, 300 and 500 mm. To be installed watertight on-site.

\*\* N.B. Maximum level of ground covering 500 mm. When high groundwater level, intensive heavy traffic, or deeper placement is present, extra precautions have to be made. Factory warranty on water tightness up to the usual aquiferous range.

dimensions in mm – subject to change – all rights reserved

02-2016-02-BO 2000 EN