

INTEGRATED GREASE SEPARATOR

For animal and vegetable oils, fats and greases

PRODUCT DESCRIPTION

ESEP reinforced concrete prefabricated "integrated grease separator" for animal and vegetable oils, fats and greases, with integrated sludge trap, **series VI 4000, capacity 2, 4, 7 and 10 l/s**. Resistant against mineral liquids by means of internal surface treatment using a watertight concrete layer followed by two-component epoxy coating. Intake and exhaust fitted with flexible Forsheda connections for plastic pipings, exhaust equipped with aeration pipe. Manhole cover cast iron lid.

APPLICATIONS

Grease separators and sludge traps are widely used in areas where professional preparation of food takes place, and other companies where greases and oils of vegetable or animal origin may contaminate the water effluent, e.g.:

- Hotels
- Restaurants
- Canteens
- Elderly centres
- Hospitals
- Butcheries
- Soap and stearin factories
- Oil mills
- Margarine and vegetable oil factories
- Fast-food preparation plants

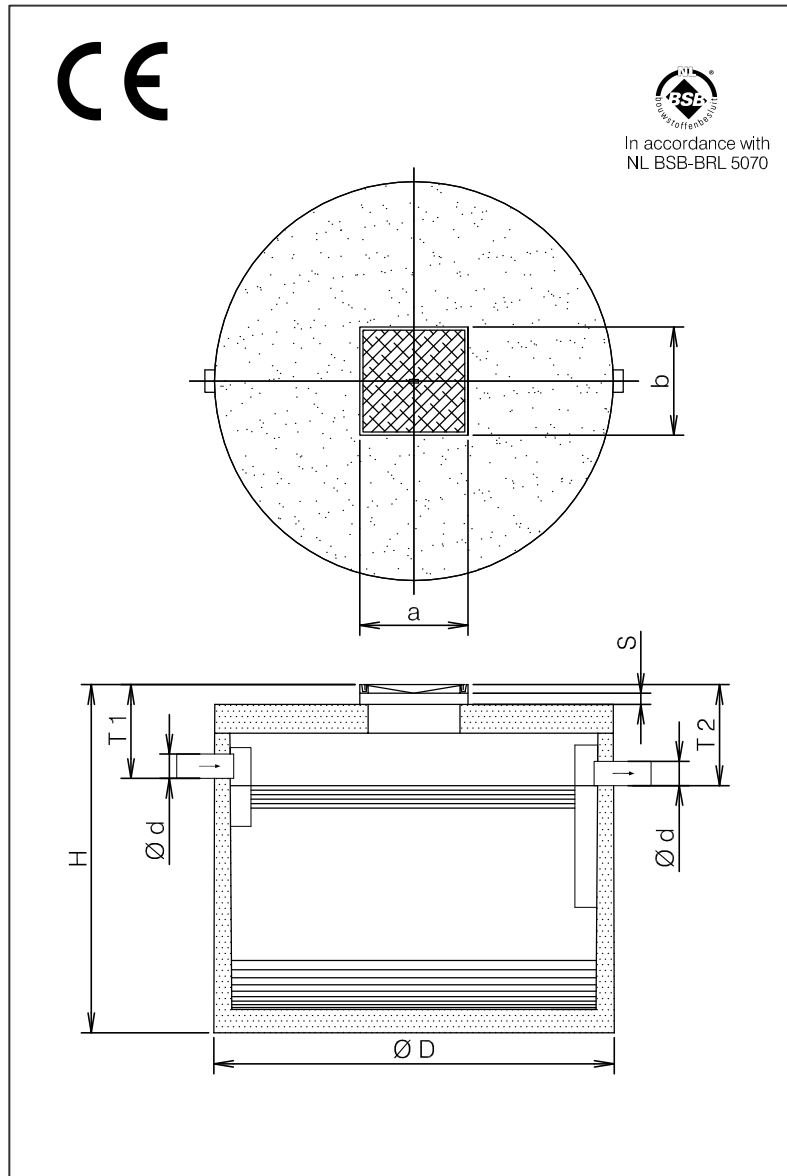
QUALITY

- Provided with internal acid- and oil resistant two-component epoxy coating.
- Capacity designed and dimensioned in accordance with NEN-EN 1825
- Concrete quality in accordance with NEN-EN 206-1 and NEN 8005, minimum C35/45, environmental classification XC2
- CE certified

Manhole cover:

- Cast iron-concrete combination conform NEN-EN 124 class B 125 kN
- or class D 400 kN wheel pressure

DRAWING



SPECIFICATIONS

Type	l/s	I*	O*	Ø D	Ø d	H	T 1	T 2	a	b	Kg.
VI 4002	2	200	210	1500	110	1660	420	490	600	600	1900
VI 4004	4	400	210	1500	110	1660	420	490	600	600	1900
VI 4007	7	700	500	2230	160	1870	420	490	600	600	4750
VI 4010	10	1000	500	2230	160	1870	455	525	600	600	4750
In case of cover class D 400 kN**							+70	+70	+70		

I* = Volume of sludge trap (litres).

O* = Storage volume of oil/fat (litres).

S = Adjustable height by using concrete extension rings.

Available in heights 100, 200, 300 and 500 mm. To be installed water-tight.

** N.B. Maximum level of ground covering 500 mm. When high ground water, intensive heavy traffic or deeper placement is present, extra precautions have to be made. Factory warranty on water tightness up to the usual aquiferous range.

dimensions in mm - subject to change - all rights reserved

02-2015-11-VI 4000 2-10 EN