

INTEGRATED GREASE SEPARATOR

For animal and vegetable oils, fats and greases

PRODUCT DESCRIPTION

ESEP reinforced concrete prefabricated "integrated grease separator" for animal and vegetable oils, fats and greases, with integrated sludge trap, **series VI 4000, capacity 15, 20, 25 and 30 l/s**. Resistant against mineral liquids by means of internal surface treatment using a watertight concrete layer followed by two-component epoxy coating. Intake and exhaust fitted with flexible Forsheda connections for plastic pipings, exhaust equipped with aeration pipe. Manhole cover cast iron lid.

APPLICATIONS

Grease separators and sludge traps are widely used in areas where professional preparation of food takes place, and other companies where greases and oils of vegetable or animal origin may contaminate the water effluent, e.g.:

- Hotels
- Restaurants
- Canteens
- Elderly centres
- Hospitals
- Butcheries
- Soap and stearin factories
- Oil mills
- Margarine and vegetable oil factories
- Fast-food preparation plants

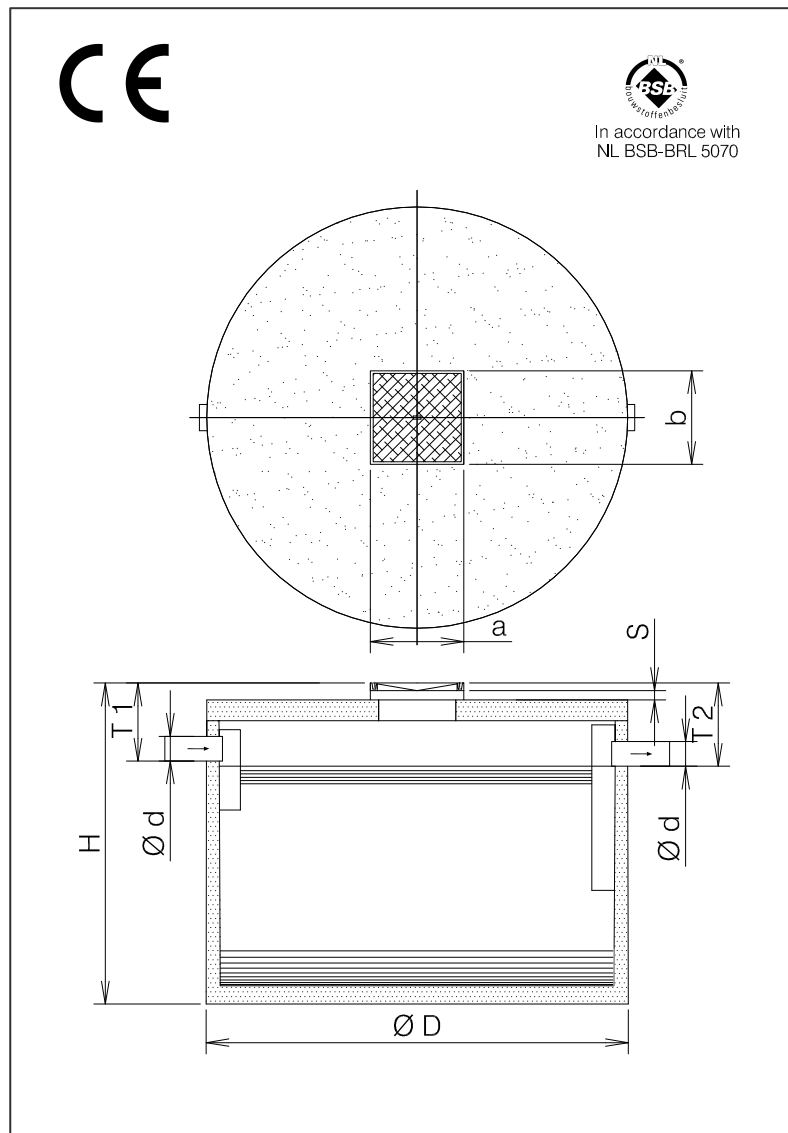
QUALITY

- Provided with internal acid- and oil resistant two-component epoxy coating.
- Capacity designed and dimensioned in accordance with NEN-EN 1825
- Concrete quality in accordance with NEN-EN 206-1 and NEN 8005, minimum C35/45 environmental classification XC2
- CE certified

Manhole cover:

- Cast iron lid conform NEN-EN 124 class B 125 kN
- or cast iron-concrete combination class D 400 kN wheel pressure

DRAWING



SPECIFICATIES

Type	l/s	I*	O*	Ø D	Ø d	H	T 1	T 2	a	b	Kg.
VI 4015	15	1500	560	2350	200	2300	520	590	600	600	9750
VI 4020	20	2000	820	2810	200	2210	520	590	600	600	12300
VI 4025	25	2500	1300	3480	200	2060	520	590	600	600	12300
VI 4030	30	3000	1300	3480	200	2600	520	590	600	600	13500
In case of cover class D 400 kN**						+70	+70	+70			

I* = Volume of sludge trap (litres).

O* = Storage volume of oil/fat (litres).

S = Adjustable height by using concrete extension rings.

Available in heights 100, 200, 300 and 500 mm. To be installed water-tight.

** N.B. Maximum level of ground covering 500 mm. When high ground water, intensive heavy traffic or deeper placement is present, extra precautions have to be made. Factory warranty on water tightness up to the usual aquiferous range.

dimensions in mm – subject to change – all rights reserved

02-2015-11-VI 4000 15-30 EN