

SLUDGE TRAP BPA

For sedimentation

PRODUCT DESCRIPTION

ESEP reinforced concrete "sludge trap". **Series BPA-KB 2000** capacities **1675, 2165 en 4175 L**. Resistant against mineral liquids by means of internal surface treatment using a watertight concrete layer followed by two-component epoxy coating. Intake fitted with odour trap. Manhole cover cast iron-concrete combination. Optionally provided with internal HDPE protective lining.

APPLICATIONS

Sludge traps are commonly used in combination with an oil or grease separator. They can also be used for protection of sewer systems or surface waters in case of a strong sludge-containing waste water flow, for example in:

- automotive companies
- engine overhauling
- petrol stations
- carwashes
- industrial areas
- parking lots
- storage areas
- environment parks
- unloading zones

QUALITY

- Provided with internal acid- and oil resistant two-component epoxy coating
- Constructed and designed for static loads in accordance with NEN-EN 858 - BRL 5251
- Concrete quality in accordance with NEN-EN 206-1 and NEN-EN 8005, minimal C35/45 environmental classification XA3
- CE certified

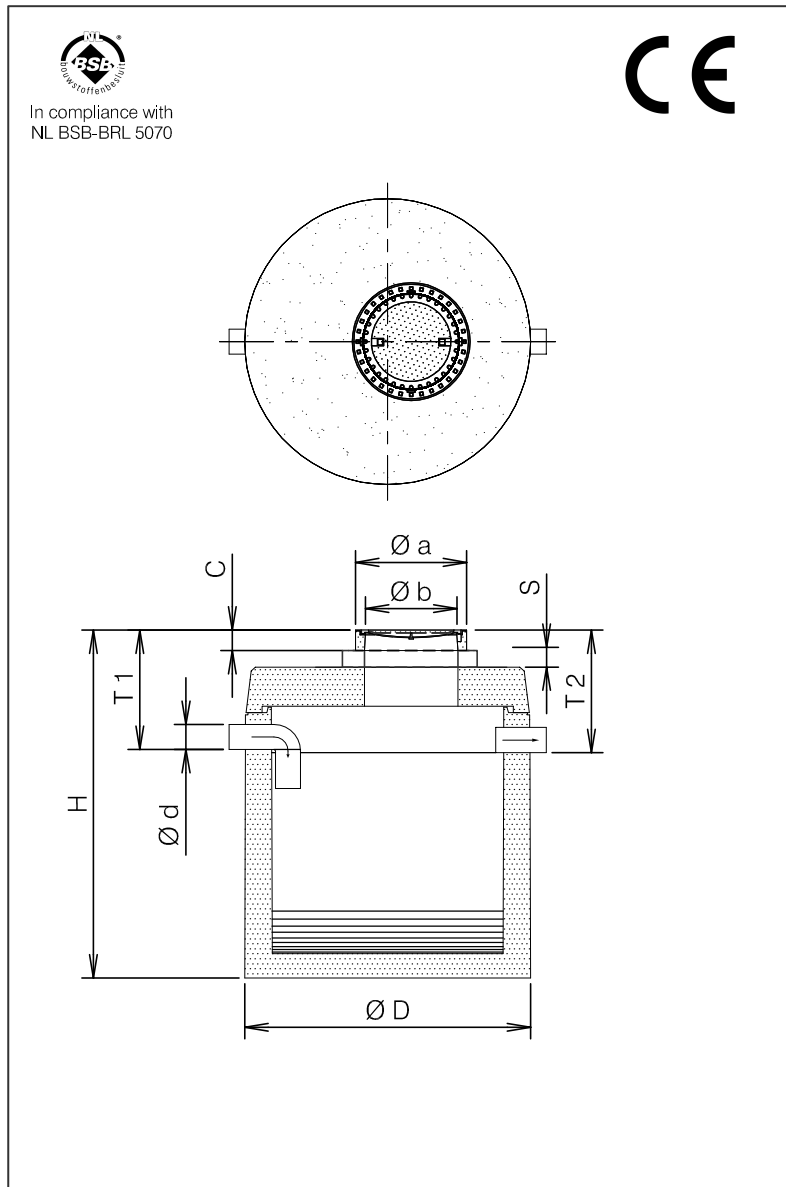
Manhole cover:

- Cast iron-concrete combination conform NEN-EN 124 class B 125 kN
- or class D 400 kN wheel pressure.

Optional:

- Provided with internal HDPE lining, tested by KIWA-TNO on chemical resistance in accordance with NEN-EN 858 - BRL 5251

DRAWING



SPECIFICATIONS

Type	I*	Ø D	Ø d	H	T 1	T 2	C	Ø a	Ø b	Kg.
BPA-KB 2016	1675	1620	160	2070	595	615	130	750	605	4100
BPA-KB 2022	2165	1820	160	2115	645	665	130	750	605	5300
BPA-KB 2041	4175	2300	200	2170	665	685	130	750	605	7250
In case of cover class D 400 kN				+ 30	+ 30	+ 30	+ 30			

I* = Volume of sludge trap (litres).

S = Adjustable height by using concrete extension rings.
Available in heights 100, 200, 300 and 500 mm. To be installed water-tight on-site.