

## INTEGRATED OIL SEPARATOR PA

For light mineral liquids (e.g. oil and petrol)

### PRODUCT DESCRIPTION

**ESEP** concrete prefabricated **"PA-certified integrated oil separator"** for light mineral fluids with integrated sludge trap, **series PA-KMI 6000, capacity 80 l/s**. Equipped with stainless steel odour trap on the inlet side and stainless steel automatic closure device on the outlet side. Manhole cover cast iron-concrete combination.

### APPLICATIONS

Oil and sludge separators are frequently used when light liquids (e.g. oil and petrol) might be released into the water flow, for example in:

- Automotive companies
- Engine overhauling
- Petrol stations
- Car washes
- Industrial areas
- Parking lots
- Storage areas
- Environmental parks
- Unloading zones

### QUALITY

- Capacity determined, dimensioned and tested according to NEN-EN 858
- With stainless steel odour trap on the inlet side and stainless steel automatic closure device on the outlet side
- Concrete quality in accordance with NEN-EN 206-1 and NEN-EN 8005, minimal C35/45 environmental classification XA3
- CE certified

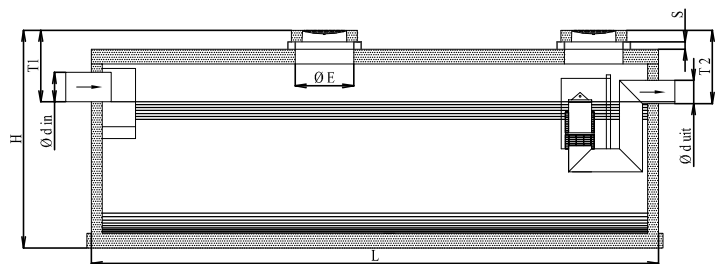
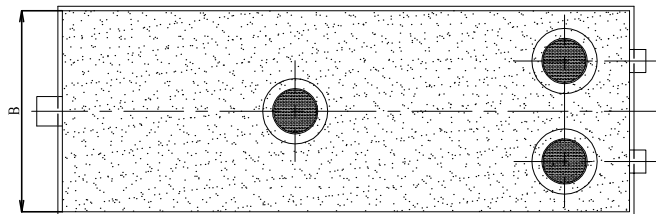
Manhole cover:

- Cast iron-concrete combination conform NEN-EN 124 class B 125 kN
- or class D 400 kN wheel pressure

### DRAWINGS



In compliance with  
NL BSB-BRL 5070



### SPECIFICATIONS

Type	l/s	I*	O*	Ø d in	Ø d uit	Ø E	H	L	B	T 1	T 2	Kg.	Kg.*
PA-KMI 6080-8	80	8810	3825	400	2x315	800	2870	4140	2740	875	900	18655	14380
PA-KMI 6080-12	80	12485	5470	400	2x315	800	2870	5740	2740	875	900	24320	18400
PA-KMI 6080-16	80	19695	7220	400	2x315	800	2870	7440	2740	875	900	31500	23400
For PA-KMI 6080-8 in case of cover class D 400kN							2970	4200	2800	925	950	24513	18615
For PA-KMI 6080-12 in case of cover class D 400kN							2970	5800	2800	925	950	31968	23835
For PA-KMI 6080-16 in case of cover class D 400kN							2970	7500	2800	925	950	41400	30480

I\* = Volume of the sludge trap (litres)

O\* = Oil storage volume (litres)

S = Adjustable height by using concrete extension rings, ØE=800 => Available in heights 100, 150, 200 and 300 mm. To be installed watertight on-site.

Kg.\* = Weight of heaviest component