

# INTEGRATED OIL SEPARATOR KOMO

For light mineral liquids (e.g. oil and petrol)

## PRODUCT DESCRIPTION

**ESEP** reinforced concrete "KOMO certified integrated oil separator" for light mineral liquids with integrated sludge trap, **serie KMI 6000, capacity 3, 6 of 10 l/s**. The concrete separator is provided with an internal HDPE protective lining. Equipped with odour trap on the inlet side, strainer fitted on the outlet of the sludge trap to retain coarse solids and HDPE automatic closure device on the outlet side. Manhole cover cast iron-concrete combination.

## APPLICATIONS

Oil and sludge separators are frequently used when light liquids (e.g. oil and petrol) might be released into the water flow, for example in:

- automotive companies
- engine overhauling
- petrol stations
- carwashes
- parking lots
- storage areas
- environment parks
- unloading zones

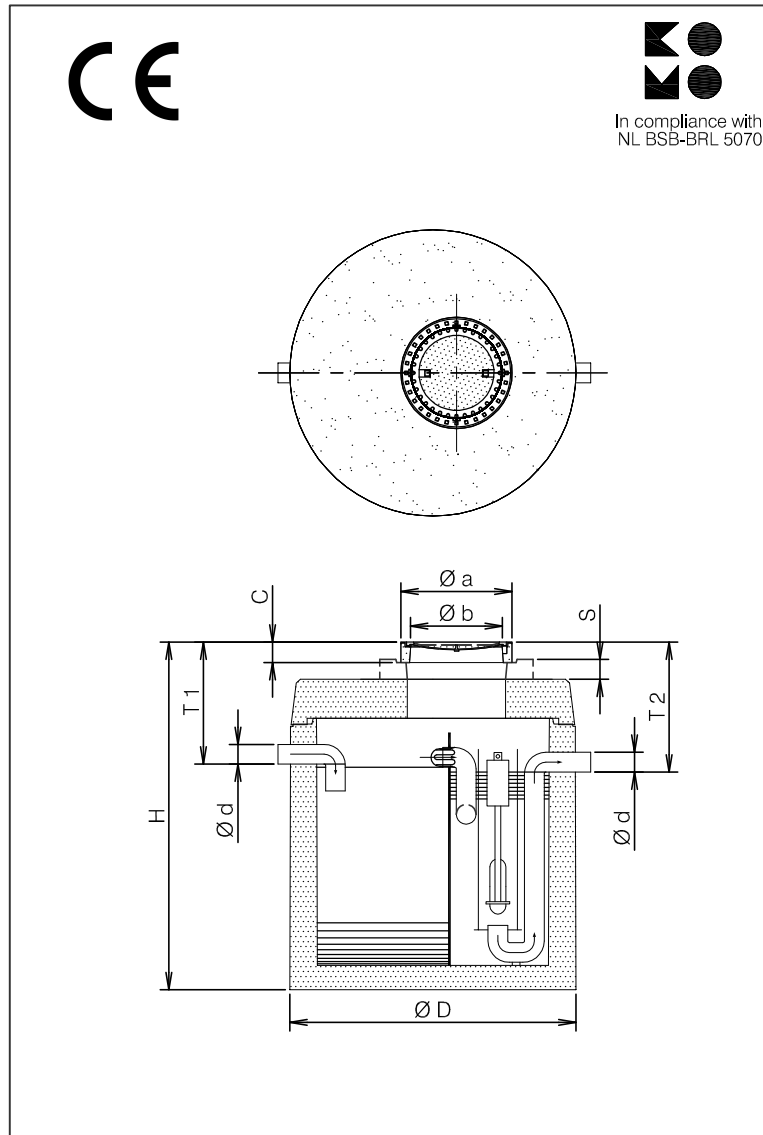
## QUALITY

- Provided with an internal HDPE protective lining, tested by KIWA-TNO on chemical resistance in accordance with NEN-EN 858 - BRL 5251
- Performance and hydraulic operation tested in accordance with NEN-EN 858
- HDPE automatic closure device on the outlet side, LGA certificate no. 4950177-14
- Constructed and designed for static loads in accordance with NEN-EN 858 - BRL 5251
- Concrete quality in accordance with NEN-EN 206-1 and NEN-EN 8005, minimal C35/45 environmental classification XA3
- **KOMO** certificate no. K 2641
- CE certified

Manhole cover:

- Cast iron-concrete combination conform NEN-EN 124 class B 125 kN
- or klasse D 400 kN wheel pressure

## DRAWING



## SPECIFICATIONS

Type	l/s	I*	O*	$\varnothing D$	$\varnothing d$	H	T 1	T 2	C	$\varnothing a$	$\varnothing b$	Kg.
KMI 6003	3	700	165	1620	125	2055	600	665	130	750	605	4500
KMI 6006	6	1380	229	1820	125	2115	665	730	130	750	605	5700
KMI 6206	6	2725	282	2300	125	2270	770	835	130	750	605	7200
KMI 6010	10	2230	372	2300	160	2270	770	835	130	750	605	7200
In case of cover class D 400 kN						+30	+30	+30	+30			

I\* = Volume of the sludge trap (liters).

O\* = Oil storage volume (liters).

S = Adjustable height by using concrete extension rings.

Available in heights 100, 200, 300 and 500 mm. To be installed water-tight on-site.