

INTEGRATED OIL SEPARATOR BPA

For light mineral liquids (e.g. oil and petrol)

PRODUCT DESCRIPTION

ESEP reinforced concrete "integrated oil separator" for light mineral fluids with integrated sludge trap, series **BPA-KMI 6000**, capacity **3, 6 or 10 l/s**. Resistant against mineral liquids by means of internal surface treatment using a watertight concrete layer followed by two-component epoxy coating. Equipped with odour trap on the inlet side, strainer fitted on the outlet side of the sludge trap to retain coarse solids and HDPE automatic closure device on the outlet side. Manhole cover cast iron-concrete combination. Optionally provided with internal HDPE protective lining

APPLICATION

Oil and sludge separators are frequently used when light liquids (e.g. oil and petrol) might be released into the water flow, for example in:

- Automotive companies
- Engine overhauling
- Petrol stations
- Car washes
- Parking lots
- Storage areas
- Environmental parks
- Unloading zones

QUALITY

- Provided with internal acid- and oil resistant two-component epoxy coating
- With HDPE automatic closure device on the outlet side, LGA certificate no. 4950177-14
- Constructed and designed for static loads according to NEN-EN 858 - BRL 5251
- Concrete quality in accordance with NEN-EN 206-1 and NEN-EN 8005, minimal C35/45 environmental classification XA3
- CE certified

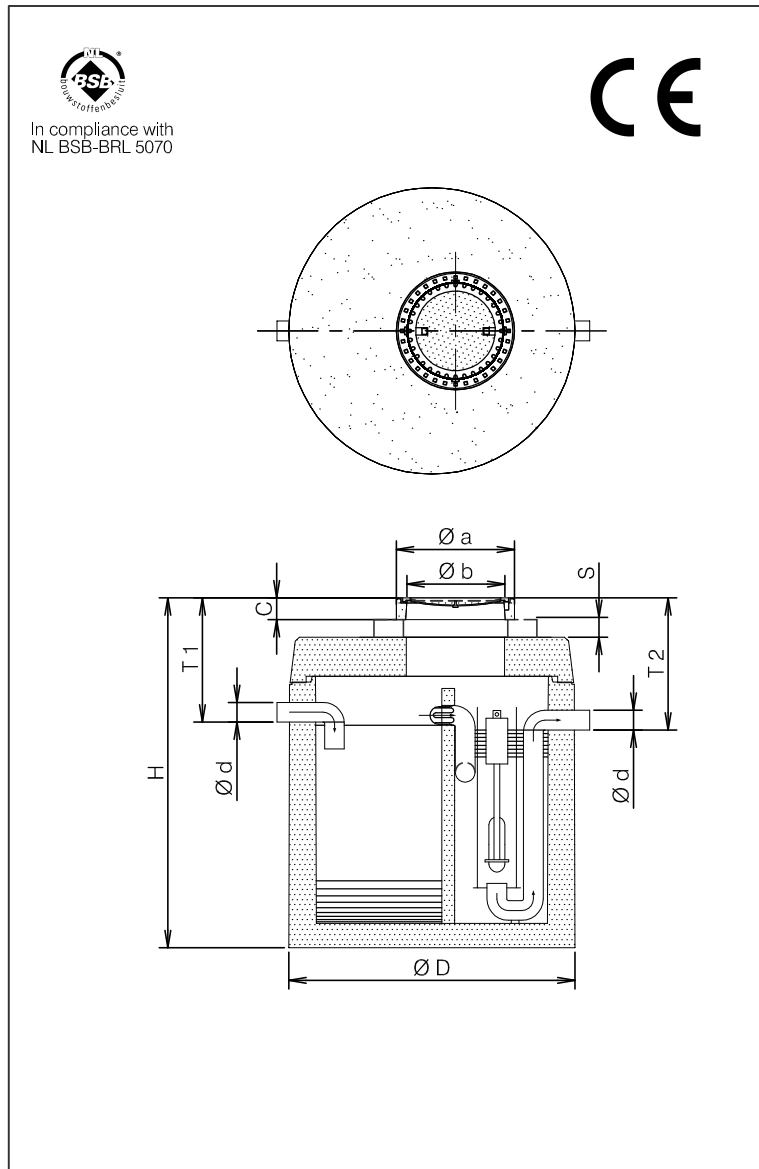
Manhole cover:

- Cast iron-concrete combination conform NEN-EN 124 class B 125 kN
- or class D 400 kN wheel pressure

Optional:

- Provided with internal HDPE protective lining, tested by KIWA-TNO on chemical resistance conform NEN-EN 858 - BRL 5251

DRAWING



SPECIFICATIONS

Type	l/s	I*	O*	Ø D	Ø d	H	T 1	T 2	C	Ø a	Ø b	Kg.
BPA-KMI 6003	3	700	165	1620	125	2055	600	665	130	750	605	4700
BPA-KMI 6006	6	1380	229	1820	125	2115	665	730	130	750	605	6000
BPA-KMI 6206	6	2725	282	2300	125	2165	630	695	130	750	605	8150
BPA-KMI 6010	10	2230	372	2300	160	2165	665	730	130	750	605	8150
In case of cover class D 400 kN						+30	+30	+30	+30			

I* = Volume of the sludge trap (litres).

O* = Oil storage volume (litres).

S = Adjustable height by using concrete extension rings.

Available in heights 100, 200, 300 and 500 mm. To be installed watertight on-site.