

SEPARATE OIL SEPARATOR BPA

For light mineral liquids (e.g. oil and petrol)

PRODUCT DESCRIPTION

ESEP reinforced concrete "oil separator" for light mineral fluids, **series BPA-KM 5000, capacity 10, 15, 20 or 30 l/s**. Resistant against mineral liquids by means of internal surface treatment using a watertight concrete layer followed by two-component epoxy coating. Equipped with odour trap on the inlet side and HDPE automatic closure device on the outlet side. Manhole cover cast iron-concrete combination. Optionally available with coalescence filter packing. Optionally provided with internal HDPE protective lining.

APPLICATIONS

Oil and sludge separators are frequently used when light liquids (e.g. oil and petrol) might be released into the water flow, for example in:

- Automotive companies
- Engine overhauling
- Petrol stations
- Car washes
- Parking lots
- Storage areas
- Environmental parks
- Unloading zones

QUALITY

- Provided with internal acid- and oil resistant two-component epoxy coating
- With HDPE automatic closure device on the outlet side, LGA certificate no. 4950177-14
- Constructed and designed for static loads according to NEN-EN 858 - BRL 5251
- Concrete quality in accordance with NEN-EN 206-1 and NEN-EN 8005, minimal C35/45 environmental classification XA3
- CE certified

Manhole cover:

- Cast iron-concrete combination conform NEN-EN 124 class B 125 kN
- or class D 400 kN wheel pressure

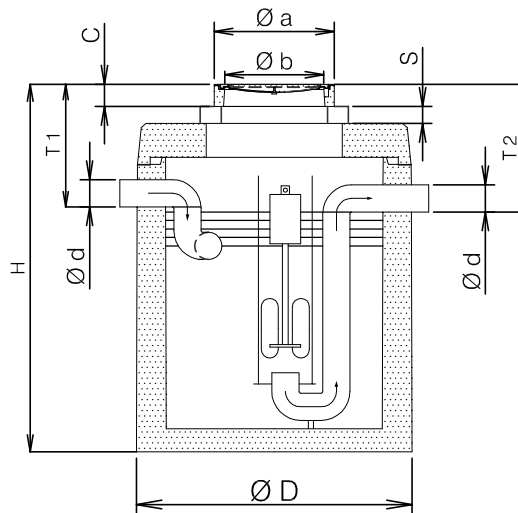
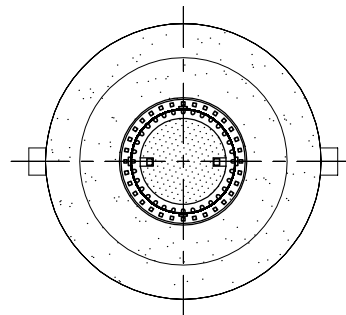
Optional:

- Provided with internal HDPE protective lining, tested by KIWA-TNO on chemical resistance conform NEN-EN 858 - BRL 5251

DRAWING



In compliance with
NL BSB-BRL 5070



SPECIFICATIONS

Type	l/s	O*	Ø D	Ø d	H	T 1	T 2	C	Ø a	Ø b	Kg.
BPA-KM 5010	10	405	1620	160	2070	630	655	130	750	605	4100
BPA-KM 5015	15	590	1820	200	2115	680	710	130	750	605	5300
BPA-KM 5020	20	1048	2300	200	2165	680	710	130	750	605	7250
BPA-KM 5030	30	1034	2300	250	2165	730	760	130	750	605	7250
In case of cover class D 400 kN					+ 30	+ 30	+ 30	+ 30			

O* = Oil storage volume (litres).

S = Adjustable height by using concrete extension rings.

Available in heights 100, 200, 300 and 500 mm. To be installed watertight on-site.