

## INTEGRATED OIL SEPARATOR PA

For light mineral liquids (e.g. oil and petrol)

### PRODUCT DESCRIPTION

**ESEP** concrete prefabricated **"PA-certified integrated oil separator"** for light mineral fluids with integrated sludge trap, **series PA-KMI 6000, capacity 15, 20, 30 l/s**. Equipped with stainless steel odour trap on the inlet side and stainless steel automatic closure device on the outlet side. Manhole cover cast iron-concrete combination. Optionally provided with internal HDPE protective lining.

### APPLICATIONS

Oil and sludge separators are frequently used when light liquids (e.g. oil and petrol) might be released into the water flow, for example in:

- Automotive companies
- Engine overhauling
- Petrol stations
- Car washes
- Industrial areas
- Parking lots
- Storage areas
- Environmental parks
- Unloading zones

### QUALITY

- Capacity determined, dimensioned and tested according to NEN-EN 858
- With stainless steel odour trap on the inlet side and stainless steel automatic closure device on the outlet side
- Concrete quality in accordance with NEN-EN 206-1 and NEN-EN 8005, minimal C45/50 environmental classification XA3
- CE certified

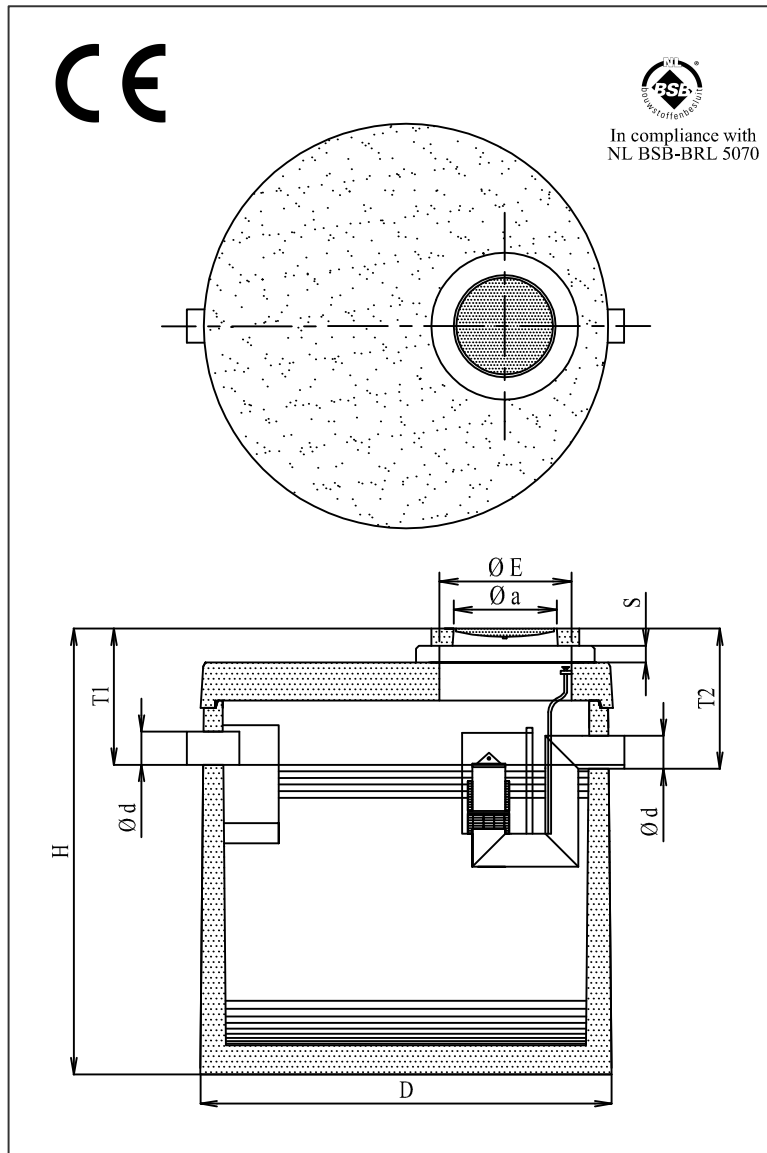
Manhole cover:

- Cast iron-concrete combination conform NEN-EN 124 class B 125 kN
- or class D 400 kN wheel pressure

Optional:

- Provided with internal HDPE protective lining, tested by KIWA-TNO on chemical resistance in accordance with NEN-EN 858 – BRL 5251

### DRAWING



### SPECIFICATIONS

Type	I/s	I*	O*	Ø D	Ø d	H	T 1	T 2	Ø E	Ø a	Kg.	Kg.*
PA-KMI 6015-3	15	3435	900	2240	200	2600	725	750	800	610	7585	5460
PA-KMI 6020-4	20	4410	900	2240	200	2910	725	750	800	610	8175	6045
PA-KMI 6020-5	20	5000	900	2240	200	3060	700	725	800	610	8465	6335
PA-KMI 6030-3	30	3275	1775	2800	250	2400	770	795	800	610	10925	7850
PA-KMI 6030-6	30	6025	1775	2800	250	2960	770	795	800	610	12640	9565

I\* = Volume of the sludge trap (litres).

O\* = Oil storage volume (litres).

S = Adjustable height by using concrete extension rings.

Available in heights 100, 200, 300 and 500 mm. To be installed watertight on-site.

Kg.\* = Weight of heaviest component